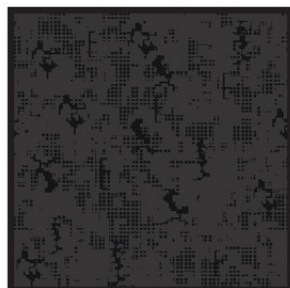
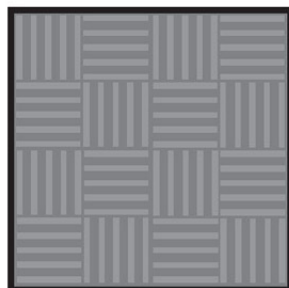


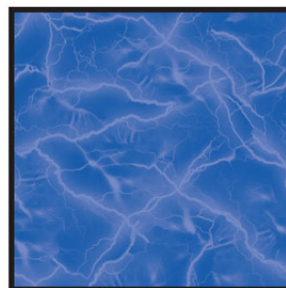
# ARMOUR FUSE



DIGI CAMO



FIVE-TEN



BOLT



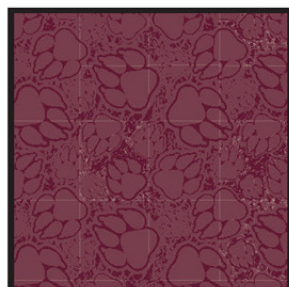
BATTLE



FEATHER



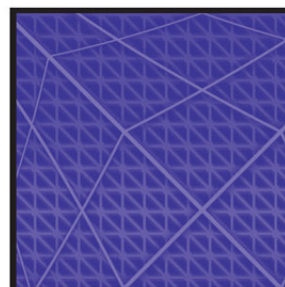
TIGER



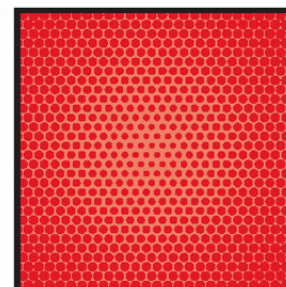
PAW



SCRATCH



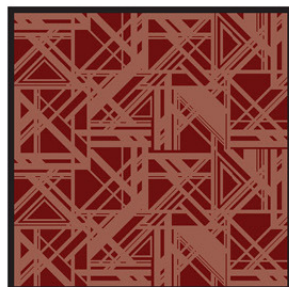
WARP SPEED



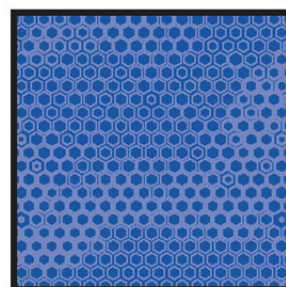
DOT



GEO



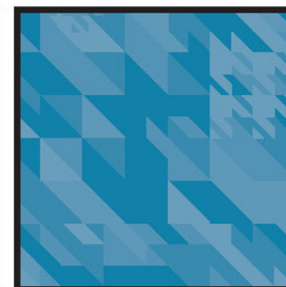
FRAGMENT



HONEYCOMB



PLAID



HOUNDSTOOTH



WHITE BLACK MIDNIGHT NAVY



UNIVERSITY RED ROYAL FOREST GREEN



TEAM KELLY GREEN MAROON CARDINAL



DARK ORANGE STEELTOWN GOLD TEAM VEGAS GOLD



PURPLE GRAY GRAPHITE



CAROLINA BLUE BROWN TEXAS ORANGE



TEAL PINK

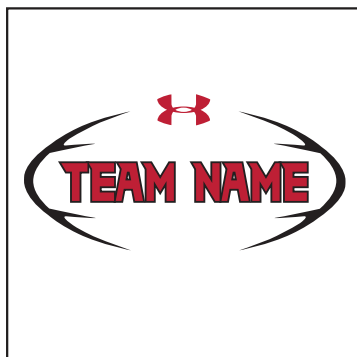
Prints available in all armourfuse colors.

# **ARMOURFUSE**

A



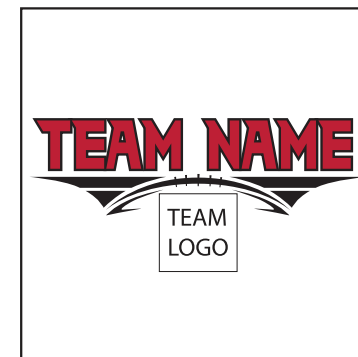
B



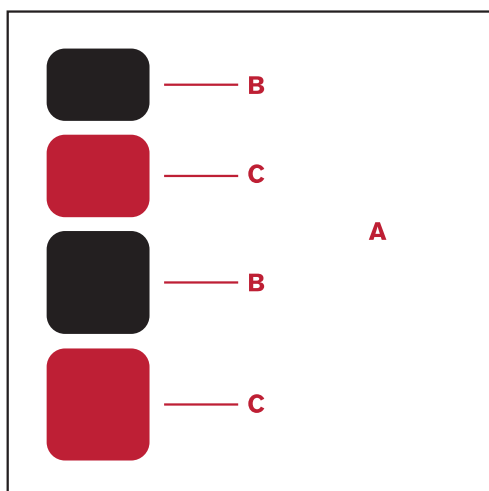
C



D

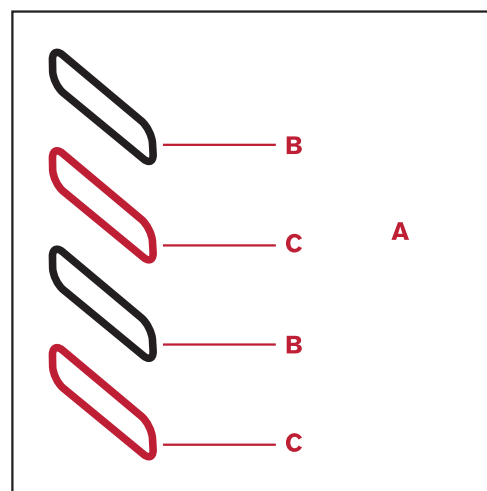


## BLOCK PRINT



- A - INSET** (no default)  
**B - BLOCK 1** (no default)  
**C - BLOCK 2** (no default)

## LIFT PRINT



- A - INSET** (no default)  
**B - LIFT 1** (no default)  
**C - LIFT 2** (no default)

## NAME DROP PRINT



TACKLE TWILL

FULL BLOCK LETTERS & NUMBERS	ONE COLOR	TWO COLORS	SCRIPT NAME	ONE COLOR	TWO COLORS
2"	\$3.50	\$5.50	Up to 6 letters	\$22.00	\$37.00
3"	\$4.00	\$6.50	Extra letters	\$4.50	\$7.50
4"	\$4.50	\$7.00	Add tail	\$7.00	\$10.00
6"	\$5.50	\$8.50			
8"	\$6.00	\$9.00			
10"	\$7.00	\$11.00			
12"	\$8.00	\$12.50			
			CUT OUT LETTERS IN TAIL	ONE COLOR	
			Up to 9 letters	\$9.00	
			Extra letters*	\$1.00	
			NAME PLATES	ONE COLOR	
			3.5" x 15" Mesh Plates	**\$6.00	

\*\*Subject to fitting in tail

\*Add \$1.00 to apply to garments

All prices shown are at suggested retail and are per garment per digit/letter location. Prices are subject to change without notice.

Listed are recommended fonts for Tackle Twill. Custom lettering fonts available upon request.

Custom styles and layouts available upon request. Team logos will be quoted based upon specifications of designs.

Available twill colors include: Black, Brown, Cardinal, Carolina Blue, Dark Orange, Forest Green, Maroon, Midnight Navy, Purple, Royal, Silver Gray, Steeltown Gold, Team Kelly Green, Team Vegas Gold, Teal, University Red and White.

There will be a 25% upcharge for orders of less than six pieces per design (except for personal names).

PREMIER

ABCDEFGHIJKLMNOPQRSTUVWXYZ

0123456789

UNDENIABLE

ABCDEFGHIJKLMNOPQRSTUVWXYZ

0123456789

LUBBOCK

ABCDEFGHIJKLMNOPQRSTUVWXYZ

0123456789

RED RAIDER (USE LUBBOCK LETTERS WITH RED RAIDER NUMBERS)

0123456789

FULL BLOCK

ABCDEFGHIJKLMNOPQRSTUVWXYZ

0123456789

CLASSIC SCRIPT

ABCDEFGHIJKLMNOPQRSTUVWXYZ

abcdefghijklmnopqrstuvwxyz

ATHLETIC SCRIPT

ABCDEFGHIJKLMNOPQRSTUVWXYZ

abcdefghijklmnopqrstuvwxyz

TIFFANY (SUBLIMATION AND TACKLE TWILL ONLY)

ABCDEFGHIJKLMNOPQRSTUVWXYZ

0123456789

FALCON (SUBLIMATION ONLY)

ABCDEFGHIJKLMNOPQRSTUVWXYZ

0123456789

UNIVERSITY

ABCDEFGHIJKLMNOPQRSTUVWXYZ

0123456789

TERRAFONT

ABCDEFGHIJKLMNOPQRSTUVWXYZ

0123456789

CADET

ABCDEFGHIJKLMNOPQRSTUVWXYZ

1234567890

PLAIN BLOCK

ABCDEFGHIJKLMNOPQRSTUVWXYZ

\*Also available in Collegiate and Double Outline fonts not shown.

LETTERING ARRANGEMENTS



SCREEN PRINTING

TEAM NAME	NUMBER OF UNITS	LIST PRICE
One Color	6-11	\$7.50
	12-47	\$5.50
	48-144	\$4.50
Two Colors	6-11	\$11.00
	12-47	\$7.50
	48-144	\$6.50
NUMBERS		
One Color	6-11	\$8.50
	12-47	\$6.50
	48-144	\$5.50
Two Colors	6-11	\$13.00
	12-47	\$9.50
	48-144	\$8.50

- All prices shown are at suggested retail and are per garment per lettering location. Prices are subject to change without notice.
- Screen charge of \$40.00 per color assessed to team names and logo designs. No screen charge for numbers.
- Split front jerseys will receive double screen and print charges per color.
- No art charge for stock designs or numbers. Extra art charge may apply for custom design artwork. Complex logos and artwork will be charged an art charge at the rate of \$120.00 per hour.
- Minimum order of six pieces for new and repeat orders.
- We reserve the right to adjust the size of layout/letters to fit the garment in the most attractive way possible. In certain situations a similar lettering style to the one requested may have to be substituted to accommodate the layout.
- Call customer service for quotes on orders that exceed above quantities, more than two colors and other special requirements.

## FABRIC

### ALL FABRICS CONTAIN

- Under Armour Moisture Transport System
- Stretch and Recovery
- All whites are polyester

### FABRIC CONTENT - PANT

91% nylon / 9% elastane (4-way stretch)

### FABRIC CONTENT - FRENZY

100% Polyester Flatback mesh

### FABRIC CONTENT - JERSEYS

100% nylon 140 denier DIAMOND Mesh  
91% nylon / 9% elastane (4-way stretch)  
88% nylon / 12% elastane STRETCH Mesh  
100% nylon 140 denier heavyweight DAZZLE

### FABRIC CONTENT - HAMMER JERSEY

100% Cationic Polyester Tricot mesh  
100% Cationic Polyester Dazzle  
87% Polyester / 13% Elastane (4-way stretch) - subject to change

### FABRIC CONTENT - BATTLE JERSEY

100% cationic polyester eyelet (tricot) mesh  
100% cationic polyester DAZZLE  
100% cationic polyester mini-porthole mesh  
89% polyester / 11% elastane (4-way stretch)

### FABRIC CONTENT - SLEEVELESS JERSEY & SHORT

87% Polyester / 13% Elastane Flat knit Jersey  
95% Polyester / 15% Elastane Mini-mesh

### FABRIC CONTENT - 7v7 COMPRESSION

81% Polyester / 19% Elastane (5.0 oz.)

## SIZING

### MEN'S SIZING

	XS	S	M	L	XL	2X	3X	4X
<b>Chest</b>	32	34-36	38-40	42-44	46-48	50-52	54-56	58-60
<b>Waist</b>	26-27	28-29	30-32	34-36	38-40	42-44	46-48	50-52

### YOUTH SIZING

	XS	S	M	L	XL
<b>Size</b>	5	8	10-12	14-16	18-20
<b>Chest</b>	—	28	30-32	34-36	38-40
<b>Waist</b>	18	19-20	22-24	26-28	30-32

### WOMEN'S SIZING

	XS	S	M	L	XL	2X	3X
<b>Size</b>	0-2	4-6	8-10	12-14	16	18	20
<b>Bust</b>	32-33.5	34-35.5	36-37.5	38-39.5	40-41.5	42-43.5	44-46
<b>Waist</b>	23-25	25.5-27.5	28-30	30.5-32.5	33-35	36-38	39-40
<b>Hips</b>	33-35	35.5-37.5	38-40	40.5-42.5	43-45	46-48	49-52

## EMBROIDERY

TEAM NAME	LIST PRICE
Small Team Name 1" X 4"	\$8.50
Large Team Name 2" X 6"	\$12.00

- Prices are based upon size of designs, not the number of colors. Prices are subject to change if design exceeds specifications.
- Dimensions are maximum space - unless specifically noted best judgement will be used.
- Letter styles are available horizontal or arched.
- No digitizing charge for team names.

MASCOTS	LIST PRICE
Mascot	\$11.00
Mascot with One Line	\$12.00
Mascot with Two Lines	\$13.00
American Flag	\$11.00

DIGITIZING	LIST PRICE
Stock Designs and Lettering	\$180.00
Custom Logos	Call for Quote



- Maximum design area 3½" by 3½" (bigger area - call for quote)
- Flag size up to 2" by 3" (bigger area - call for quote)
- All designs require an additional digitizing charge, except:
  - 1) Digitized designs supplied on a disk
  - 2) Digitized design is a re-order of an existing design
  - 3) No digitizing charge for American Flags
- Non-stock designs and lettering styles may require an additional charge at Under Armour's discretion (call for quote).
- There will be a 25% upcharge for orders of less than six pieces per design.

## COLOR CHARTS

### FABRIC COLORS

BLACK	WHITE	MIDNIGHT NAVY
SILVER GRAY	UNIVERSITY RED	ROYAL
FOREST GREEN	MAROON	STEELTOWN GOLD
DARK ORANGE	CAROLINA BLUE	PURPLE
TEAM VEGAS GOLD	CARDINAL	VINTAGE WHITE
TEAM KELLY GREEN	BASEBALL GRAY	

### DECORATION ONLY

PINK	TEAL	BROWN

CUSTOM SLEEVE PRINT STRIPES

	LIST PRICE
ONE COLOR	\$9.00
TWO COLOR	\$11.00

\*OPTIONS - Code numbers listed below stripe patterns

\*Stripes may be adjusted to fit smaller garments and not measure exactly as shown.

1/2" STRIPE  
1/2" SPACE  
2" STRIPE  
1/2" SPACE  
1/2" STRIPE

01 // UQSS01

1/2" STRIPE  
1/2" SPACE  
2" STRIPE  
1/2" SPACE  
1/2" STRIPE

02 // UQSS02

3/4" STRIPE  
1/2" SPACE  
3/4" STRIPE  
1/2" SPACE  
3/4" STRIPE

03 // UQSS03

3/4" STRIPE  
1/2" SPACE  
3/4" STRIPE  
1/2" SPACE  
3/4" STRIPE

04 // UQSS04

3/4" STRIPE  
1/4" SPACE  
3/4" STRIPE  
1/4" SPACE  
3/4" STRIPE  
1/4" SPACE  
3/4" STRIPE

05 // UQSS05

2" STRIPE  
1/2" SPACE  
2" STRIPE

06 // UQSS06

1/4" STRIPE  
1" STRIPE  
1/4" STRIPE  
1" SPACE  
1/4" STRIPE  
1" STRIPE  
1/4" STRIPE  
1" SPACE

07 // UQSS07

1" STRIPE  
1" STRIPE  
1" SPACE  
1" STRIPE  
1" STRIPE

08 // UQSS08

1 1/2" STRIPE  
1/2" SPACE  
1 1/2" STRIPE

09 // UQSS09

CUSTOM RIB-KNIT SIDE/SHOULDER INSERTS

	LIST PRICE
ALL OPTIONS	\$24.00

\*All stripe patterns designed to fit in 3" side/shoulder inserts

\*Additional charge for Auburn pant only, Upstate jersey insert at no additional charge

INK & RIB-KNIT COLORS:	
Black	Royal
Brown	Silver Grey
Cardinal	Steeltown Gold
Carolina Blue	Team Kelly Green
Dk. Orange	Team Vegas Gold
Forest Green	Teal
Maroon	University Red
Midnight Navy	White
Purple	Pink

First ink color ordered will be printed where the black stripe is indicated.

01  
UFJIN11 (JERSEY)  
UFPIN11 (PANT)

02  
UFJIN21 (JERSEY)  
UFPIN21 (PANT)

03  
UFJIN12 (JERSEY)  
UFPIN12 (PANT)

04  
UFJIN22 (JERSEY)  
UFPIN22 (PANT)

05  
UFJIN23 (JERSEY)  
UFPIN23 (PANT)

06  
UFJIN24 (JERSEY)  
UFPIN24 (PANT)

07  
UFJIN25 (JERSEY)  
UFPIN25 (PANT)

08  
UFJIN26 (JERSEY)  
UFPIN26 (PANT)

09  
UFJIN27 (JERSEY)  
UFPIN27 (PANT)

EXTENDED LENGTHS

EXTENDED JERSEY LENGTH	LIST PRICE
UFJ2LB – Add 2" to body	\$3.00
UFJ4LB – Add 4" to body	\$6.00
UFJ6LB – Add 6" to body	\$9.00

EXTENDED PANT LENGTH	LIST PRICE
UFP1LI – Add 1" to inseam	\$3.50
UFP2LI – Add 2" to inseam	\$7.00
UFP3LI – Add 3" to inseam	\$10.50

ADDITIONAL OPTIONS	LIST PRICE
UFWLJ – Waist length (Custom only)	N/C
(S-M 28", L-5XL 29" Adult, graduated 22" to 25" on Youth)	
UFJWAST – Waist length (Stock only)	\$5.00
UFPSLOT – Slotted Pant (Stock only)	\$7.00